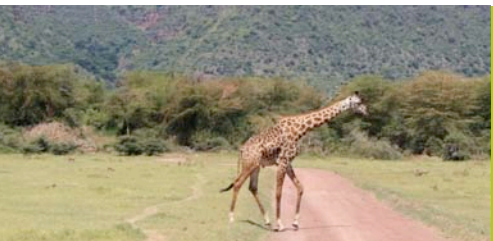




# Mount Kilimanjaro including a camping safari



*Please join Corinne Taylor Aldous of Goliger's TravelPlus and Cindy Weber of Webco Sports on an exciting and challenging small group adventure to climb Mount Kilimanjaro and a camping safari!*

## book now!

To reserve your place on this amazing tour, please contact:

Corinne Taylor-Aldous, at:  
[Corinne@goligerstravel.com](mailto:Corinne@goligerstravel.com)  
PHONE: (519) 741-0770  
TOLL FREE: (800) 465-4437  
[www.gotravelplus.com/tours](http://www.gotravelplus.com/tours)



## itinerary



Cindy Weber

Corinne T.

**September 26** - Depart Canada to Nairobi

**September 27** - Arrive Nairobi overnight

**28 September** - Transfer Nairobi to Arusha overnight

**MACHAME ROUTE** 7 Day Kilimanjaro Climb

**29 September** - Machame Gate - Machame Hut -10 km 5-6 hrs. After breakfast you will be transferred to Kilimanjaro National Park gate where you will embark on your climb of Kilimanjaro. Today sees about 5 - 6 hours of walking, through the cultivation zone and the forest to Machame Hut. Here you will spend the evening in the huts, and dinner and overnight

**30 September** - Machame Hut (3100m)- Shira Hut (3800m)-10 km, 5-7hrs. Leave Machame hut in the morning, path leads up through steep rocky ridges. Shira hut at 3800m above sea level is reached in the late afternoon. Overnight Shira Hut.

**01 October** - Shira Hut (3800m) - Barranco Hut (3950m) - 10 km, 6 - 7 hrs. From the Shira Plateau, you will continue east passing the junction heading toward the peak of Kibo. Along the way you will pass "Sharks Tooth" which will bring you up to the Arrow Glacier. You now continue downhill to Barranco Hut, where you will spend the evening.

**02 October** - BARRANCO HUT (ACCLIMATIZATION) After breakfast, this day is spent to acclimatize to the altitude.

**03 October** - Barranco Hut (3950m) - Barafu Hut (4600m)- 8 km, 7 - 9 hrs. Leave Barranco hut and cross the floor of the Great Barranco Valley and up to the Barranco wall; continue the trek on the south circuit path passing through the Karanga Valley (last water point - Karanga River). Your path joins the Mweka route and up the broad ridge to Barafu Hut at 4600m. above sea level. Overnight Barafu hut.

**04 October** - Barafu Hut (4600m.) - Stella Point (5600M.) - Uhuru Peak (5895m.) - 11 hrs - Mweka Hut - 5km - 4-7 hrs. Between midnight and one (1a.m) start the trek to conquer the highest point in Africa. This section of the route is very steep and is considered the steepest on the non-technical path on this mountain. You will take at least five hours to reach the crater rim at Stella Point 5745m above sea level. Uhuru Peak 5895m is reached after one hour from Stella point. The fascinating color changing sunrise is the deserved reward at Uhuru Peak.

**05 October** - Mweka Hut - Mweka Gate - 10Km 3 - 4 hrs. This day is spent on a leisurely descent through the forest on a narrow path to the gate where we arrive to meet our driver and transfer to Arusha. Overnight

**06 October** - We start our camping safari, leave Arusha for Lake Manyara National Park via Mto-wa mbu Village. Game drive in the park. Picnic lunch. Dinner and overnight at Twiga campsite.

**07 October** - After breakfast drive to Serengeti, game viewing en route to the campsite. Dinner and overnight at Seronera campsite.

**08 October** - Morning game drive in Serengeti, Later in the afternoon drive to Ngorongoro via Olduvai Gorge for dinner and overnight at Simba campsite (on the crater rim)

**09 October** - After breakfast, descend into the crater tour, Picnic lunch. Later in afternoon return to Arusha. End of safari. Overnight Arusha

**10 October** - Transfer to Arusha for return flight home.

**11 October** - Arrive in Toronto.

## amazing tour price

*in CDN Dollars, based on Double Occupancy, per person \$4,885*

*(Price may fluctuate due to currency and fuel surcharges)*

Limited availability, max. 16 people.

### Price does not include:

Incidentals, Insurance, visa fees & local taxes, Meals not mentioned above, Personal tips/gratuities, Beverages, Optional Tours .

*Insurance is mandatory & is extra.*